

CERTIFICATE OF LOCATION OF GOVERNMENT CORNER

Northeast Corner of Section 23, Township 107N, Range 41W, 5th P.M.

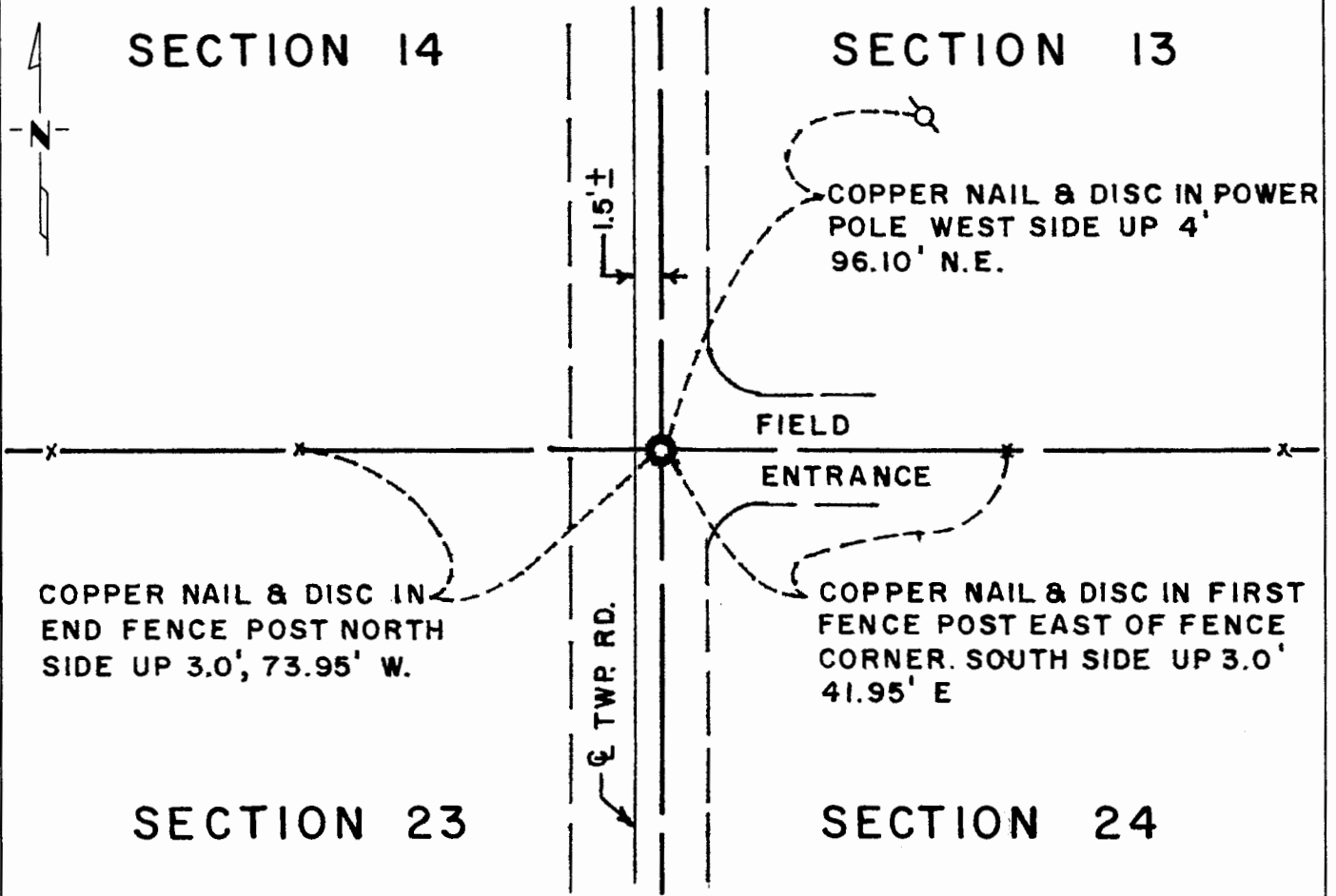
STATE OF MINNESOTA, County of Murray

At the corner location shown on the sketch:

On DATE Sep. 23, 1981 found a 5" x 6" x 18" long pointed stone standing upright about 18" below the road surface
 left monument as found, lowered monument, removed monument (explain)

On DATE Sep. 23, 1981 placed a cast iron monument above the stone so the top of the cast iron monument is about 6" below road surface

SKETCH OF REFERENCE TIES



Statement of evidence relative to this corner location is on back of page.

I hereby certify that this document and the data contained herein was prepared by me or under my direct supervision.

Robert C Jones 9/30/81
SIGNATURE DATE

Registration No. 11864

Land Surveyor, Professional Engineer

County Surveyor, County Engineer

OFFICE OF THE COUNTY RECORDER

County of Murray

I hereby certify that this document was filed in the Co. Recorders office at 2:40 P.M. on the 9th day of September A.D., 19 82

County Recorder Willard W. Ohme

By _____, Deputy

DOCUMENT NO. 166299

Statement of Evidence: Northeast Corner Section 23, T 107 N, R 41 W

- 1861 - The original Public Land Survey was done by L.G.M. Fletcher. A wood post was set above a charred stake in a dirt mound and trenches and pits were dug to mark the corner.
- 1981 - No records could be found of any surveys or remonumentation being done in this area since the original Public Land Survey.

A Minnesota Department of Transportation survey crew excavated for this corner. A hole measuring 4 feet by 5 feet by 2 feet deep was dug. A 5" by 6" by 18" long pointed stone was found about 18" below the road surface. The stone was standing upright and was surrounded by old pieces of rotted wood. When the stone was dug out so it could be lowered, more old rotted wood was found underneath the stone.

A Mn/DOT cast iron monument was placed directly above the stone so that the top of the monument is about 6" below the road surface.

The stone is accepted as the location of the section corner because it fits long standing occupation lines and the old pieces of wood that were found could possibly be the remains of the original government post. The stone is in line with fence lines east and west and about 1.5 feet east of the centerline of the north/south township road.

For further information regarding this corner, contact the Mn/DOT Surveys Section in Willmar, Mn 56201.